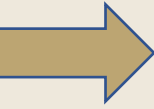


Series VII: Mirror cases from the 13th to 14th Century

Ivory Carvings from the 14th Century



152.

Szerelmespár, lovagi torna. Francia, 14. sz. 2. fele.
/ Courting couple, Tournament. French, second
half of the 14th century. Boulogne-sur-Mer,
Château-Musée de Boulogne-sur-Mer. Ltsz. / Inv.
N.: 408.

MENU

Series VII: Mirror cases from the 13th to 14th Century
Ivory Carvings from the 14th Century



153.
Doboz. Márk király. Francia, 1330–1350 k. /
Casket. King Mark. France, ca. 1330–1350. New
York, Metropolitan Museum of Art. Ltsz. / Inv. N.:
17.190.173; 1988.16.

MENU

Series VII: Mirror cases from the 13th to 14th Century
Ivory Carvings from the 14th Century

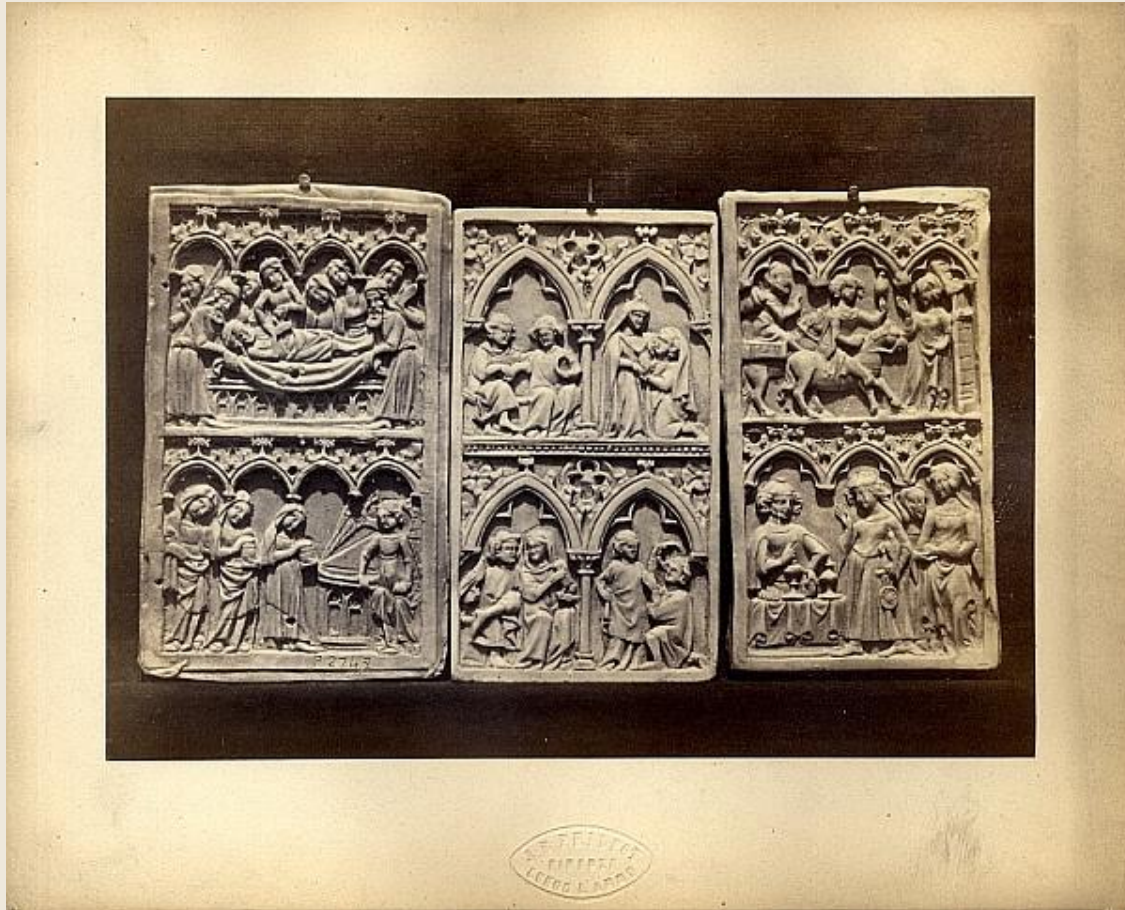


154.
Írótábla vagy doboz. Francia (Párizs ?), 1300 k. /
Writing tablet or casket. French, (Paris ?), ca.
1300. London, British Museum. Ltsz. / Inv. N.:
1856,0509.2.

MENU

Series VII: Mirror cases from the 13th to 14th Century

Ivory Carvings from the 14th Century



MENU

155.

Bal oldalon: Diptychon része. Sírbatétel, asszonyok a sírnál. Francia, 14. sz. vége. / Left: Fragment of a diptych. The Entombment, Three Holy Women at the Tomb. French, late 14th century. London, British Museum. Ltsz. / Inv. N.: 1856,0509.3.

Középen: Író tábla. Szerelmesek találkozása, ülő pár. Francia, 1320–1340 k. / In the middle: Writing tablet. Courting couple (meeting of lovers), seated couple. French, ca. 1320–1340. Paris, Musée du Louvre. Ltsz. / Inv. N.: MRR 426.

Jobb oldalon: Író tábla. A tékozló fiú. Francia (Párizs), 1330–1350 k. / Right: Writing tablet. The Prodigal Son. French (Paris), ca. 1330–1350. Baltimore, Walters Art Museum. Ltsz. / Inv. N.: 71.279.

Series VII: Mirror cases from the 13th to 14th Century
Ivory Carvings from the 14th Century

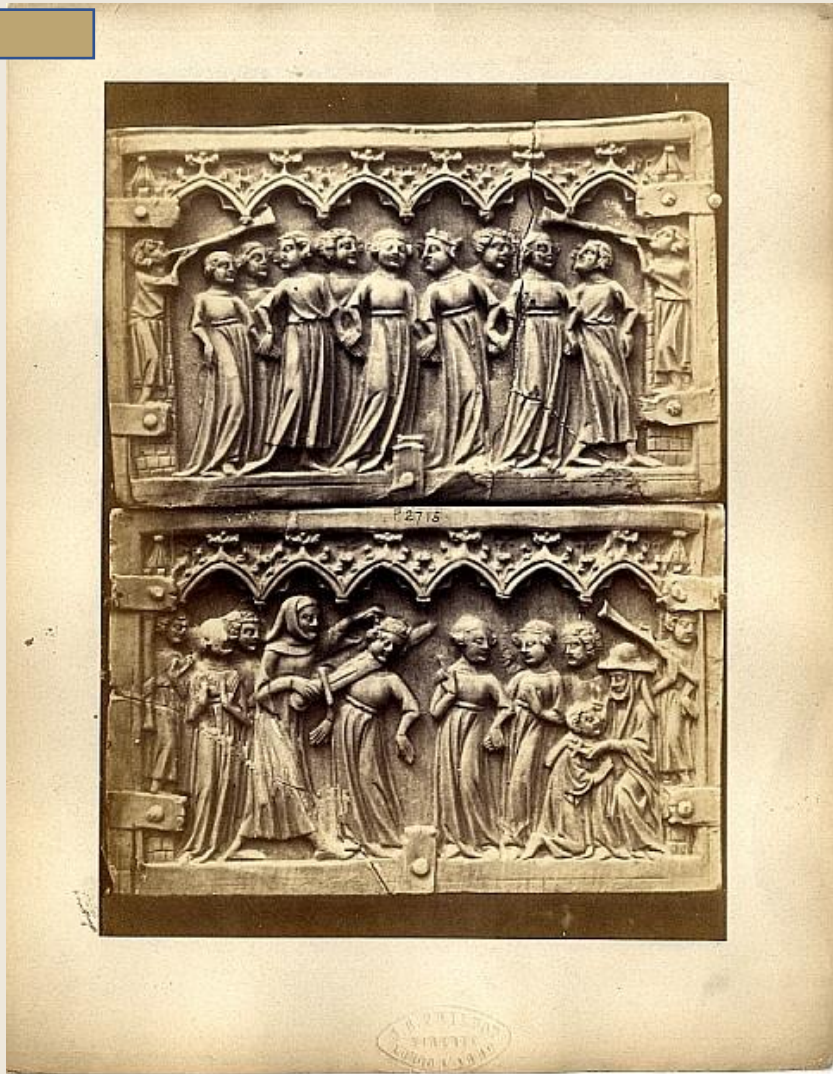


156.

Doboz. La chastelaine du Vergier. Párizsi, 1340–1350 k. / Casket. Romance of the Châtelaine de Vergi. Paris, ca. 1340–1350. Paris, Musée du Louvre. Ltsz. / Inv. N.: MRR 77.

MENU

Series VII: Mirror cases from the 13th to 14th Century
Ivory Carvings from the 14th Century



157.

Doboz. La chastelaine du Vergier. Párizsi, 1340–1350 k. / Casket. Romance of the Châtelaine de Vergi. Paris, ca. 1340–1350. Paris, Musée du Louvre. Ltsz. / Inv. N.: MRR 77.

MENU

Series VII: Mirror cases from the 13th to 14th Century
Ivory Carvings from the 14th Century



Dublin coll. Chaudron
W 487
K 304

158.

Mária megkoronázása, Bemutatás a templomban.
Francia, 14. sz. / Coronation of the Virgin,
Presentation in the Temple. Dublin, National
Museum of Ireland. Lts. / Inv. N.: 1888:105.

MENU

Series VII: Mirror cases from the 13th to 14th Century
Ivory Carvings from the 14th Century



159.
Szűz Mária a gyermek Jézussal. Francia, 15. sz.
eleje. / Mary and the Child Jesus. French,
beginning of the 15th century. London, British
Museum. Ltsz. / Inv. N.: 1856,0623.41.

MENU

Series VII: Mirror cases from the 13th to 14th Century
Ivory Carvings from the 14th Century



London BM 327

160.

Jesse fája. Francia, 16. sz. / The Tree of Jesse.
French, 16th century. London, British Museum.
Ltsz. / Inv. N.: 1875,0617.1

MENU

Series VII: Mirror cases from the 13th to 14th Century
Ivory Carvings from the 14th Century



161.
Doboz harci jelenetekkel. Bizánci
(Konstantinápoly), 11. sz. eleje. / Casket with
Warriors and Scenes of Combat. Bizantyne
(Constantinople), beginning of the 11th century.
London, Victoria & Albert Museum. Ltsz. /Inv. N.:
247-1865.

MENU

Series VII: Mirror cases from the 13th to 14th Century
Ivory Carvings from the 14th Century



162.

Doboz harci jelenetekkel. Bizánci
(Konstantinápoly), 11. sz. eleje. / Casket with
Warriors and Scenes of Combat. Bizantyne
(Constantinople), beginning of the 11th century.
London, Victoria & Albert Museum. Ltsz. /Inv. N.:
247-1865.

MENU

Series VII: Mirror cases from the 13th to 14th Century
Ivory Carvings from the 14th Century



163.

Doboz harci jelenetekkel. Bizánci
(Konstantinápoly), 11. sz. eleje. / Casket with
Warriors and Scenes of Combat. Bizantyne
(Constantinople), beginning of the 11th century.
London, Victoria & Albert Museum. Ltsz. / Inv. N.:
247-1865.

MENU

Series VII: Mirror cases from the 13th to 14th Century
Ivory Carvings from the 14th Century



164.
Portions d'un coffre, Sujets mythologiques et bibliques. Collection de M. G. Fontaine.

MENU

Series VII: Mirror cases from the 13th to 14th Century

Ivory Carvings from the 14th Century



165.

Doboz harci jelenetekkel. Bizánci (Konstantinápoly), 11. sz. eleje. / Casket with Warriors and Scenes of Combat. Bizantyne (Constantinople), beginning of the 11th century. London, Victoria & Albert Museum. Ltsz. / Inv. N.: 247-1865.

MENU

Series VII: Mirror cases from the 13th to 14th Century
Ivory Carvings from the 14th Century



166.
Ládikó tetőlemeze. Két lovag. Bizánci (Isztambul),
11. sz. közepe. / Casket Lid with Warriors on
Horseback. Byzantine (Istanbul), mid-11th century.
London, Victoria & Albert Museum. Ltsz. / Inv. N.:
A.542:1-1910.

MENU

Series VII: Mirror cases from the 13th to 14th Century
Ivory Carvings from the 14th Century

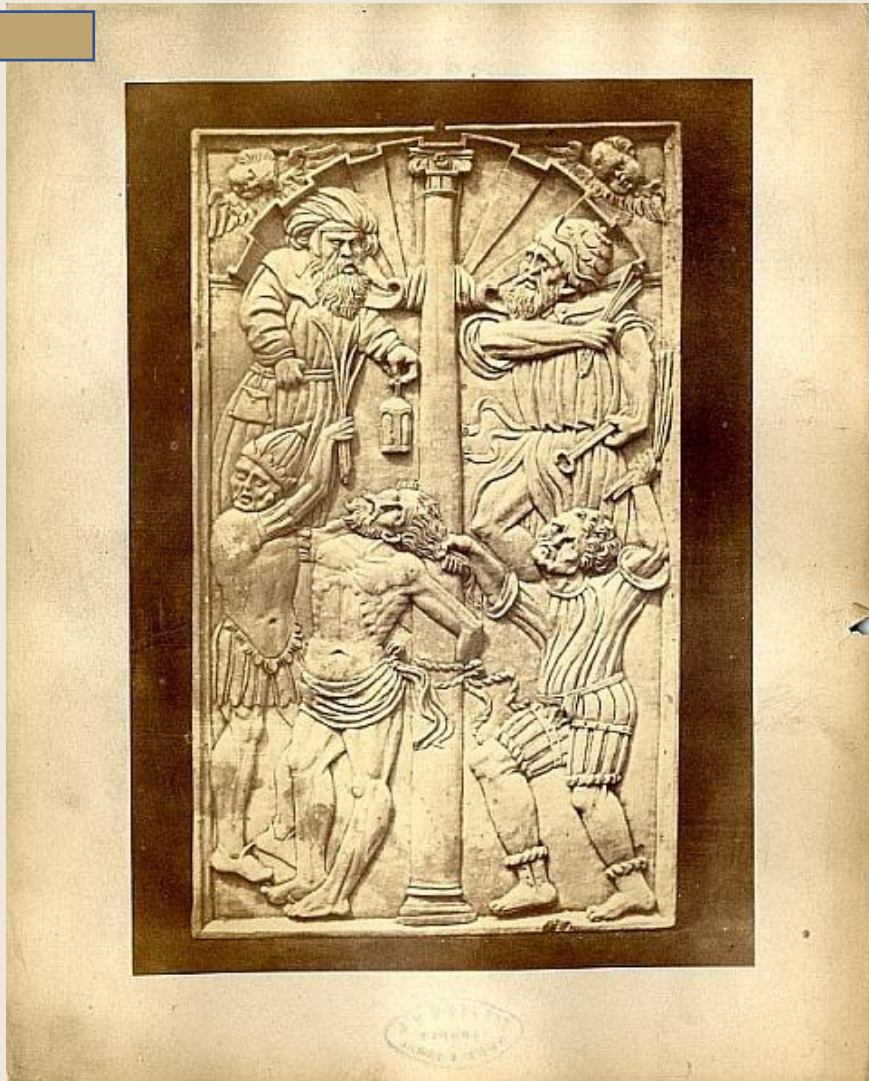


167.

Krisztus mennybemenetele. Aachen, 9. sz. eleje. /
The Ascension of Christ. Aachen, beginning of the
9th century. Darmstadt, Hessisches
Landesmuseum. Ltsz. / Inv. N.: Kg 54 : 217.

MENU

Series VII: Mirror cases from the 13th to 14th Century
Ivory Carvings from the 14th Century

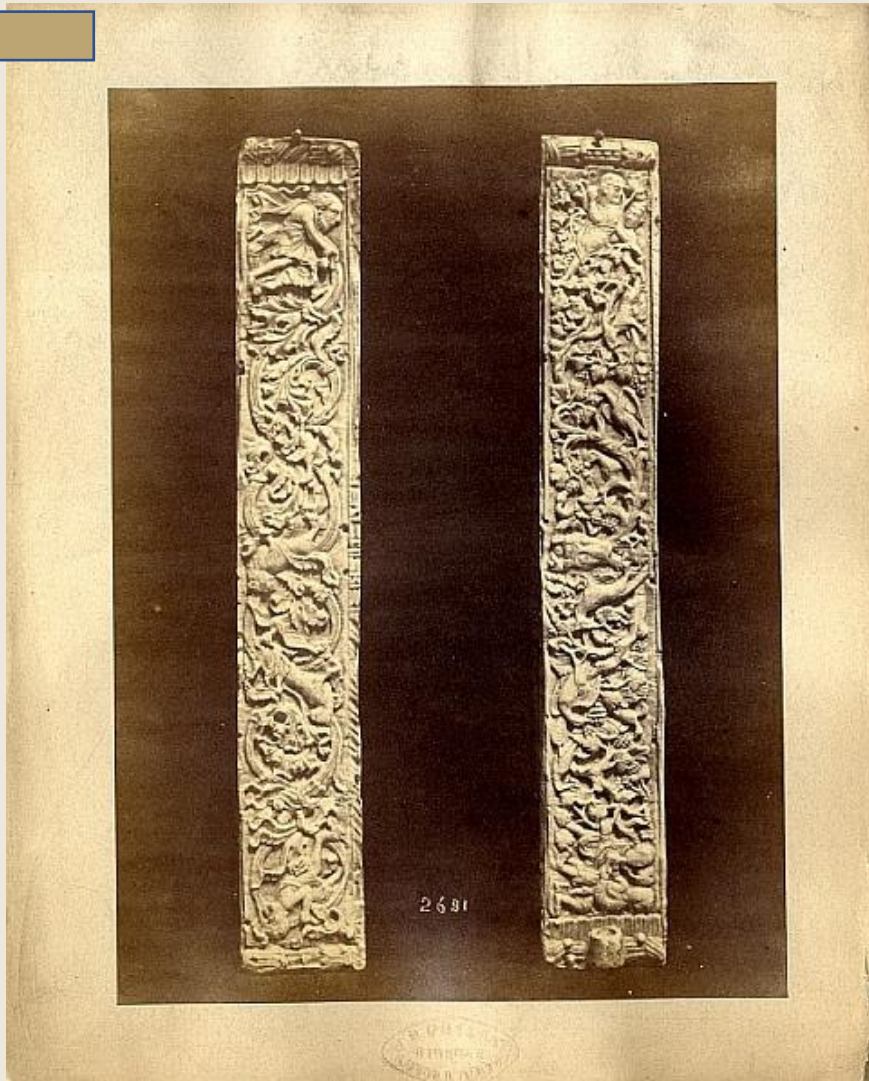


168.

Krisztus ostorozása. Német, 16. sz. / The
Flagellation of Christ. German, 16th century.
London, British Museum. Ltsz. / Inv. N.:
1856,0623.117.

MENU

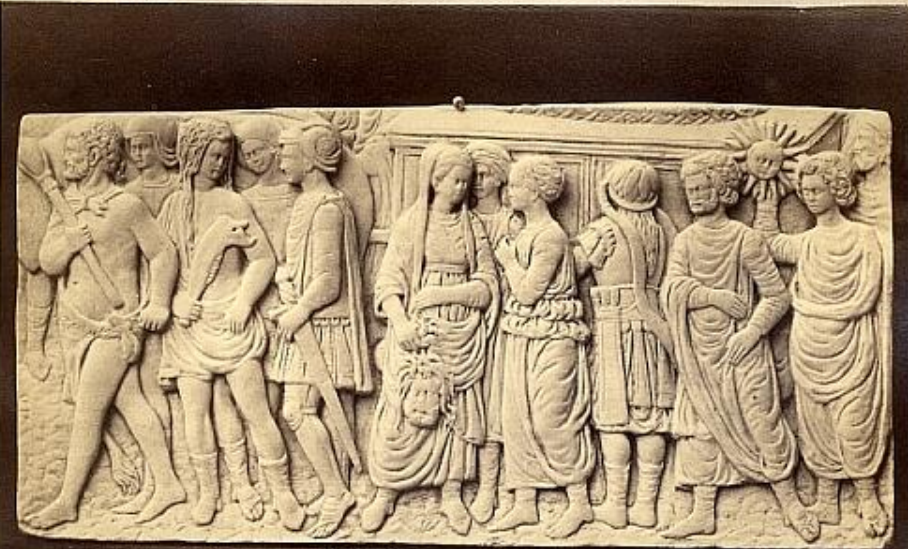
Series VII: Mirror cases from the 13th to 14th Century
Ivory Carvings from the 14th Century



169.
Flabellum. Francia, 860–870 k. / Flabellum.
French, ca. 860–870. Firenze, Museo Nazionale
del Bargello. Ltsz. / Inv. N.: 31 C.

MENU

Series VII: Mirror cases from the 13th to 14th Century
Ivory Carvings from the 14th Century

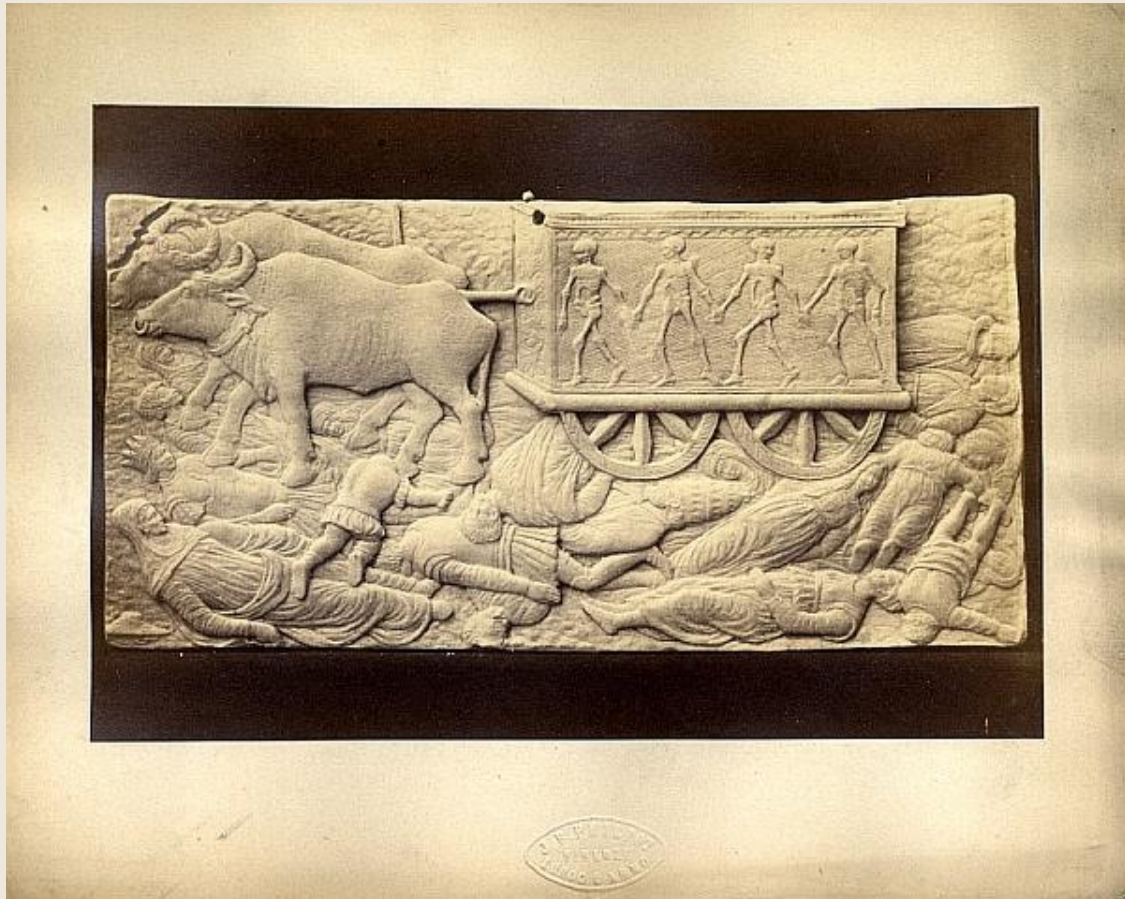


170.

A Hírnév diadala. Észak-itáliai, 15. sz. utolsó negyede. / The Triumph of Fame. Northern Italian, last quarter of the 15th century. Paris, Musée du Louvre. Ltsz. / Inv. N.: MR 377.

MENU

Series VII: Mirror cases from the 13th to 14th Century
Ivory Carvings from the 14th Century

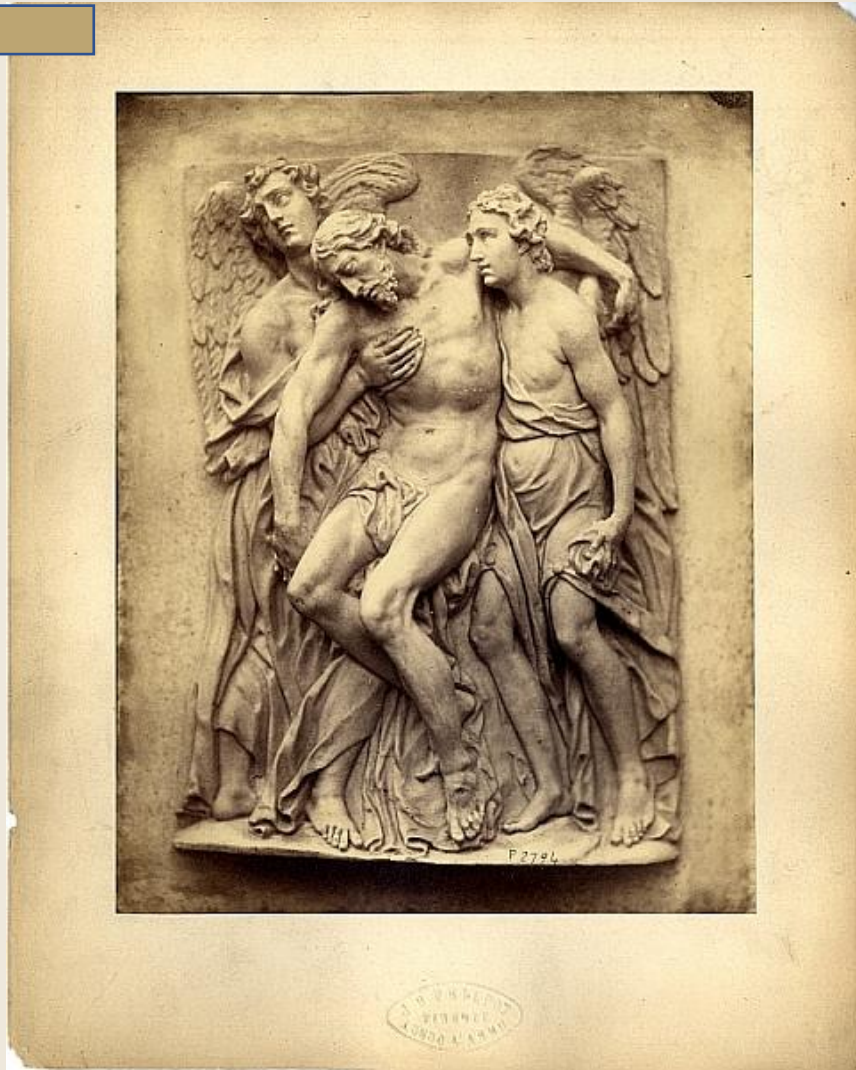


171.

A halál diadala. Észak-itáliai, 15. sz. utolsó negyede. Egykor a Meyrick (Douce) Collection-ban. / The Triumph of Death. Northern Italian, last quarter of the 15th century. Earlier in the Meyrick (Douce) Collection.

MENU

Series VII: Mirror cases from the 13th to 14th Century
Ivory Carvings from the 14th Century



172.

Girolamo Campagna után: Halott Krisztus angyalokkal. Itáliai (?), 1600–1630 k. / After Girolamo Campagna: Dead Christ supported by two angels. Italy (?), ca. 1600–1630. London, British Museum. Ltsz. / Inv. N.: 1852,0327.2.

MENU